

# **Web Time Sheet**

## **User's Guide**

## Table of Contents

Introduction.....	3
Understanding User Roles and Status .....	3
Process Flow Chart.....	5
Instruction:	
A. Logging On UIS Web.....	6
B. Welcome Page .....	7
C. Employee Main Menu .....	8
D. Selection Criteria .....	9
E. Status Definitions .....	10
F. Entering Time.....	11
G. Time In and Time out for Part-time employees.....	12
H. Entering Hours for Full-time employees .....	13
I. Restarting .....	15
J. Enter Comments.....	16
K. Submitting Time.....	18
L. Altering Time After Submission .....	19
M. Returned for Correction.....	19
N. Certifying Time.....	20
Contact Information and Tips.,.....	21

## INTRODUCTION

**Web Time Sheet** is an automated **time reporting and approval process**. This user's guide will provide an overview of the system and how to submit your work hours via the web. For additional information or training, please contact the Payroll Office.

### Web Time Sheet Advantages:

1. Access to time sheet at your convenience, from any internet accessible computer.
2. Ability to check the status of your time sheet throughout the pay period process.
3. Increased accuracy of data collection and eliminate paper process.
4. Data feeds directly into the Payroll system after supervisor approval.
5. Reduced cost and increased customer service.

### Understanding User Roles and Status:

**Originator** – The originator is the employee who enters hours on time sheet and submits to Approver. No changes can be made after the time sheet has been submitted for approval. The initial status will be Not Started and change to In Progress as time is entered. If the approver does not agree with the time sheet submitted they may Return for Correction. The originator must then correct and re-submit. Originator should check their time to ensure the status is updated to Approved and then Completed before the pay period deadline. Immediately contact your Approver if time-sheet is not approved.

**Acknowledger** – Typically the acknowledger is a senior manager who reviews time sheets within the organization / department. The acknowledger may only indicate that they have reviewed the time sheet. Only approvers and originators can change time sheets. No action is required by the acknowledger for processing of time sheet. This person is also known as the FYI (For Your Information) user.

**Approver** – Typically the approver is the Supervisor or Time Keeper of the originator. Time sheets in Pending status are awaiting approval. The approver must approve the time sheet before it can be processed by Payroll. They may also correct the time sheet or Return for Correction to originator. The Approver must immediately notify the originator if they make changes or Return for Correction. Time sheets must be approved before the payroll deadline. Only approved time-sheets will be processed. When a time sheet has been approved the status will change to Approved. At this point the time sheet is ready for processing and only Payroll can make changes. When the time sheet has been processed by payroll the status will change to Completed. An approver must select a Proxy who can approve time sheets in their absence.

**Proxy** – The proxy is a person selected by the approver to act on their behalf. The proxy can approve time sheets for the Approver.

### Originator / Employee Responsibility:

1. Enter hours worked on a daily basis.
2. Submit time by the end of the pay period or work week.
3. If time is not submitted via the web, you must contact your supervisor before the end of pay period.

4. Review and maintain accurate attendance records.

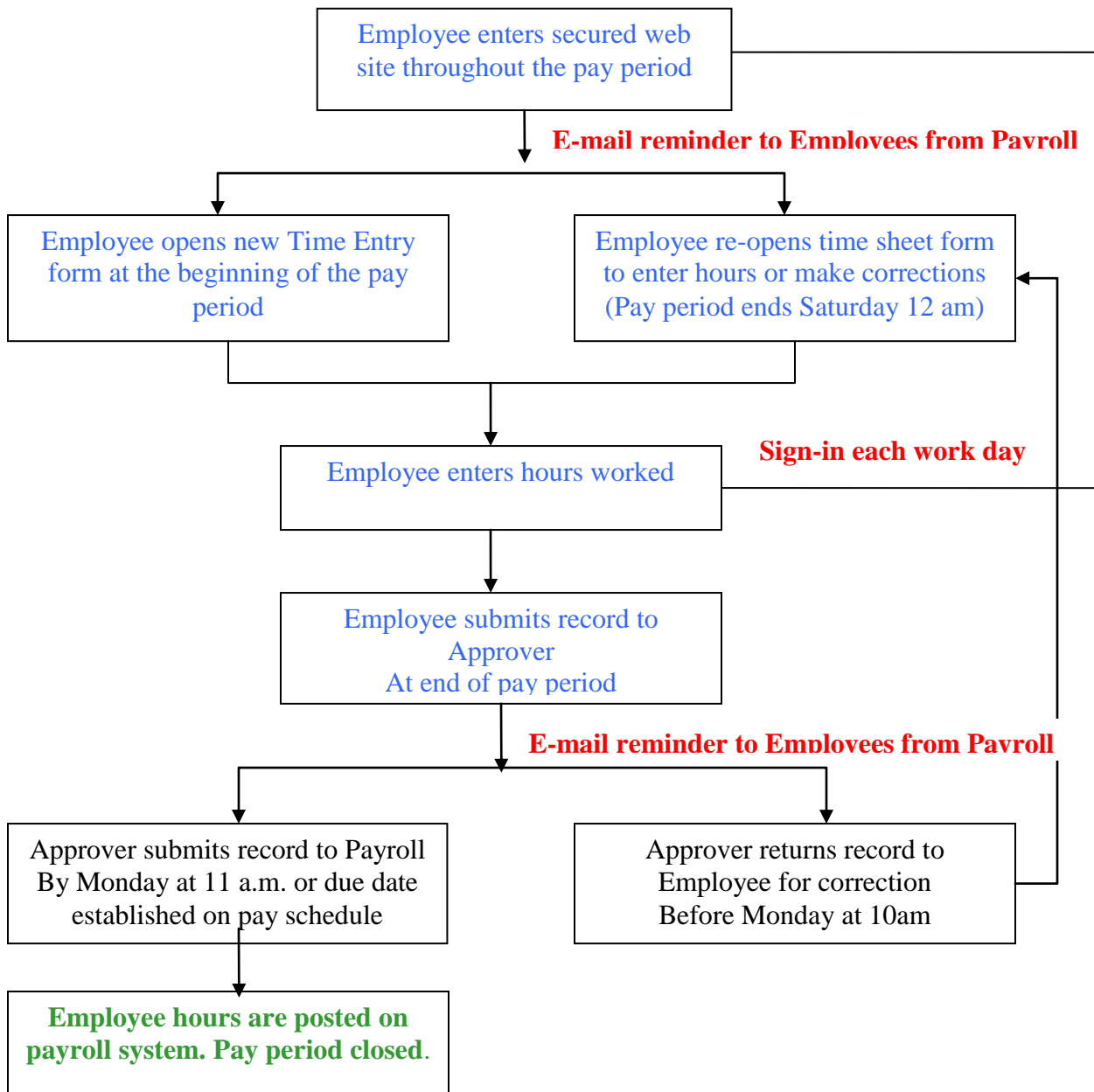
**Approver / Supervisor Responsibility:**

1. Notify Payroll of changes or updates in web Approver or Proxy list. During the initial set-up department managers will work with Payroll to establish web approver list and Proxy.
2. Approvers will set-up Proxy Approver who will approve time in their absence.
3. Approvers will log-on to web and review employee time. Any changes will be communicated to employee prior to final approval.
4. Approvers will submit employee time at end of pay period or before designated due date and time (check pay schedule due dates).
5. If time is not approved via web contact Payroll Office before the end of the pay period.

Originator and Approver must ensure time is approved by the due date. Time sheets not approved will not be processed by Payroll. Only time sheets with a final status of Completed are processed by payroll and receive a paycheck.

Payroll pay schedule can be found on the Human Resources website or contact Payroll Office.

## Process Flowchart



# Instructions

## A. Logging On to [UIS](#) via Web:

Internet Site: [https://apollo.stjohns.edu/sjusus/twbkwbis.P\\_WWWLogin](https://apollo.stjohns.edu/sjusus/twbkwbis.P_WWWLogin)

- Select [Login UIS](#)
- Login to the secure area by entering your
- User ID and PIN.
- Select Login.

User Login - Microsoft Internet Explorer provided by St. John's University

File Edit View Favorites Tools Help

HELP EXIT

## User Login

---

### St. John's Information System

Please enter your user Identification Number (ID) and your Personal Identification Number (PIN). When finished, click Login. **Your ID must be nine digits and your PIN must be six digits (no hyphens or spaces).**  
If you are a new Freshmen or Transfer, please refer to your acceptance letter and deposit confirmation form which contains your student identification number (X number) and instructions.  
**If your ID begins with X make sure you type a capital X.**

When you are finished, please Exit and close your browser to protect your privacy.

If you have forgotten your pin, please type in your User Id, then click the Forgot PIN? button.

If you are still having problems with your pin Click Here to reset your pin.

User ID:

PIN:

Login Forgot PIN?

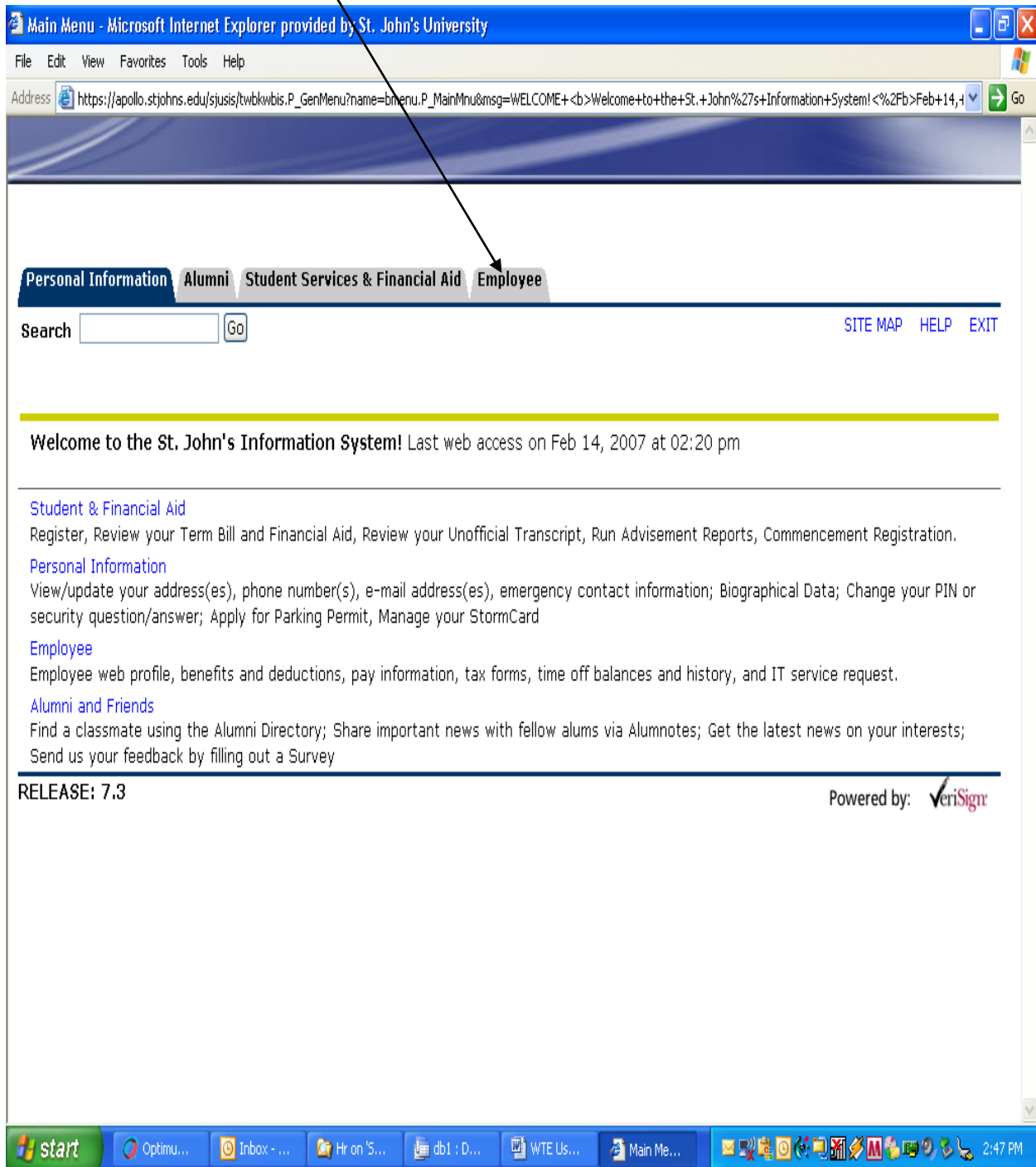
RELEASE: 7.4

Powered by: VeriSign

start Optimum... Inbox - ... Hr on 'S\_... db1 : Da... WTE Use... User Logi... 2:44 PM

**B. Welcome page**

1. Click on **Employee** or Employee tab at top.



**C. Employee Main Menu****2. Click on Time Sheet**

Employee Main Menu - Microsoft Internet Explorer provided by St. John's University

File Edit View Favorites Tools Help

Address [https://apollo.stjohns.edu/sjasis/twbkwbis.P\\_GenMenu?name=pmenu.P\\_MainMnu](https://apollo.stjohns.edu/sjasis/twbkwbis.P_GenMenu?name=pmenu.P_MainMnu) Go

Personal Information Alumni Student Services & Financial Aid **Employee**

Search  Go RETURN TO MENU SITE MAP HELP EXIT

---

[Employee Web Profile](#)  
View/update employee information as you want published in the official SJU web site.

[Benefits and Deductions](#)  
Update or view your retirement plans, Health insurance information, Flex spending accounts, Miscellaneous deductions; Change your beneficiary information; Update/View tuition remission

[Pay Information](#)  
View your Direct Deposit breakdown; View your Earnings and Deductions History; View your Pay Stubs.

[Tax Forms](#)  
Change W-4 information; View your W-2 Form or T4 Form.

[Time Off Current Balances and History](#)  
View time off balances and history

[Time Sheet](#)  
Enter/update time sheet

[Information Technology Menu](#)  
(For use of IT supervisors only)

[PFP Summary for Supervisors](#)  
(For use of IT and HR supervisors only)

[Marketing & Communication Job Tracking](#)  
(((for use of the Offices of Marketing and Communication, and Printing and Distribution))

[P & D Online](#)  
(Enter and track Work Orders with Printing and Distribution Services Department)

[Customer Service Menu](#)

---

RELEASE: 7.3.1

Powered by: VeriSign

start Optim... Inbox - ... Hr on 'S... db1 : D... WTE Us... Emplo... 2:48 PM



## D. Selection Criteria

The Selection Criteria Page is displayed for employees to enter their time sheet, select "Access my Time Sheet". Approvers will select "Approve or Acknowledge Time".

Time Sheet/Leave Request/Proxy - Microsoft Internet Explorer provided by St. John's University

File Edit View Favorites Tools Help

Address [https://apollo.stjohns.edu/sjasis/bwptais.P\\_SelectTimeSheetRoll](https://apollo.stjohns.edu/sjasis/bwptais.P_SelectTimeSheetRoll) Go

Personal Information Alumni Student Services & Financial Aid **Employee**

Search  Go SITE MAP HELP EXIT

## Time Sheet/Leave Request/Proxy

Determine the action you want to take and click the radio button. If you are acting as a Proxy for an approver, please select a name from the list and click **Select**. To act as a Superuser, click the check box and then click **Select**.

### Selection Criteria

	My Choice
Access my Time Sheet:	<input type="radio"/>
Access my Leave Report:	<input type="radio"/>
Access my Leave Request:	<input type="radio"/>
Approve or Acknowledge Time:	<input checked="" type="radio"/>
Act as Proxy:	<input type="text" value="Self"/>
Act as Superuser:	<input type="checkbox"/>

Select

[Proxy Set Up](#)

RELEASE: 7.0

Powered by: VeriSign

start Optimum Onli... Inbox - Micro... Hr on 'S\_gne... WTE Users G... Time Sheet/L... 4:35 PM

All current and previous positions will be displayed on this screen. Selects the **position and pay period** for the current pay period (status *Not Started* or *In Progress*).

Select the correct active pay period from the pull-down menu. Previously completed pay periods will also be appear in the pull-down menu.

After selecting the correct pay period, click on the **Time Sheet** button. This will initialize your time sheet.

#### E.Status Definitions for Time Sheets:

<b>Status</b>	<b>Definition</b>
Not Started	The time sheet has not been initialized.
In Progress	The time sheet has been initialized by the employee but is not completed or ready for submission to the approver. Hours may or may not have been entered.
Pending	The time sheet has been submitted for approval. It will remain in pending status until all Approvers have taken action.
Approved	A time sheet has been approved and is ready for processing by Payroll.
Awaiting Approval	The time sheet was returned for correction while it was in the approval process.
Error	The time sheet contains one or more errors. Contact Payroll extension 6345.
Completed	The time sheet has been fully processed by Payroll.

## F. Entering Time

The Time Sheet Page is used to enter hours for the pay period. The page contains three important information sections:

1. The top section contains position information, including the timeline for submitting your time sheet.
  - a. **You must enter time daily during the time sheet period and submit all hours by the pay period end date.**
  - b. **You MUST submit time to the Approver before the "Submit By Date" indicate on this page.**
2. The middle section summarizes time entered for the pay period.
3. The bottom section provides information on the status of the time sheet.

### Begin Entering Time:

Click on 'Enter Hours' found in the middle section.

Personal Information Student and Financial Aid **Employee**

Search  Go [SITE MAP](#) [HELP](#) [EXIT](#)

## Time Sheet

To begin, click a link under the date where you want to enter time. Click NEXT/PREVIOUS button for more dates within the period.

**Time Sheet**

Title and Number: College Work Study Student I-V -- S01969-00

Department and Number: Human Resource Director -- 261

Time Sheet Period: Apr 02, 2006 to Apr 15, 2006

Submit By Date: Feb 15, 2008 by 12:00 P.M.

Earning	Shift	Default Hours or Units	Total Hours	Total Sunday Units	Monday Apr 03, 2006	Tuesday Apr 04, 2006	Wednesday Apr 05, 2006	Thursday Apr 06, 2006	Friday Apr 07, 2006	Saturday Apr 08, 2006
Regular	1	0	.25		.25	Enter Hours	Enter Hours	Enter Hours	Enter Hours	Enter Hours
<b>Total Hours:</b>			.25		.25	0	0	0	0	0
<b>Total Units:</b>				0	0	0	0	0	0	0

Position Selection Comments Preview **Submit for Approval** Restart Next

Submitted for Approval By:  
 Approved By:  
 Waiting for Approval From:

RELEASE: 7.2.1.1

Powered by: VeriSign

**G. Time In and Time Out for Part-time employees:**

Full-time employees will only enter total hours worked for the day. Part-time and Student employees must enter time in and time out.

Personal Information Student and Financial Aid **Employee**

Search   [SITE MAP](#) [HELP](#) [EXIT](#)

## Time In and Out

Please enter your time in intervals of 15 minutes (10:00, 10:15, 10:30, 10:45). The format should be 99:99.

Date: Sunday, Apr 02, 2006  
Earnings Code: Regular

Shift	Time In	Time Out	Total Hours
1	10:00 AM	10:15 AM	.25
1			0
1			0
1			0
1			0
1			.25

**Account Distribution**

Earnings Code	Shift	Hours
Regular	1	.25

RELEASE: 7.2.1.1 Powered by:

**Steps for Time In and Out (Part-time and Student Workers):**

1. **Time In and Out** - Enter time that you arrived to work in intervals of 15 minutes and remember to change AM/PM accordingly, and then do the same for your departure time (**Time Out**). Total hours will be calculated for you. If you work more than 5 consecutive hours in one day you must have a meal break of at least one-half hour. Enter a new time-in and time-out to show any breaks longer than 15 minutes for the work day.
2. Click on **Save** and you are done.
3. Repeat this process for each day in the pay period.

**H. Entering Hours for Full-time employees:**

Full-time employees are only required to enter total work hours for the day. After you click on **Enter Hours** for the appropriate earnings you will then enter hours for the day.

**Time Sheet**

To begin, click a link under the date where you want to enter time. Click NEXT/PREVIOUS button for more dates within the period.

**Time Sheet**

Title and Number: Payroll Representative -- S02950-00  
 Department and Number: Human Resource Director -- 261  
 Time Sheet Period: May 28, 2006 to Jun 10, 2006  
 Submit By Date: Feb 15, 2008 by 12:00 P.M.

Earning: Regular  
 Date: May 28, 2006  
 Shift: 1  
 Hours: 7

Save Copy Account Distribution

Earning	Shift	Default Hours or Units	Total Hours	Total Units	Sunday May 28, 2006	Monday May 29, 2006	Tuesday May 30, 2006	Wednesday May 31, 2006	Thursday Jun 01, 2006	Friday Jun 02, 2006	Saturday Jun 03, 2006
Regular	1	0	0		Enter Hours	Enter Hours	Enter Hours	Enter Hours	Enter Hours	Enter Hours	Enter Hours
Holiday	1	0	0		Enter Hours	Enter Hours	Enter Hours	Enter Hours	Enter Hours	Enter Hours	Enter Hours

**Steps (only full-time employees):**

1. Enter **Hours** for the entire day (ex. 7, 7.5 or 8). **DO NOT CHANGE OR ENTER SHIFT.**
2. Click on **Save** and you are done.
3. Repeat this process for each day of the pay period.

After you have entered all your hours for the pay period and before you submit to approver, click the **Preview** button on the Time Sheet Page. The Preview page displays all hours entered for each earning code. Always preview your time sheet before you submit to approver.

Preview Web Page - Microsoft Internet Explorer provided by St. John's University

File Edit View Favorites Tools Help

Back Forward Stop Reload Home Search Favorites Print Mail Address Book Recent Sites

Address [http://devapollo.stjohns.edu:8070/tban7/bwpktetm.P\\_TimeSheetButtonsDriver](http://devapollo.stjohns.edu:8070/tban7/bwpktetm.P_TimeSheetButtonsDriver) Go

**Personal Information** **Employee**

Search  Go [SITE MAP](#) [HELP](#) [EXIT](#)

Be sure to set your printer to landscape before printing the document.

Rose Costales  
Payroll Representative, S02950-00

Human Resource Director, 261

**Time Sheet**

Earning Code	Shift	Total Hours	Total Units	Sunday, May 28, 2006	Monday, May 29, 2006	Tuesday, May 30, 2006	Wednesday, May 31, 2006	Thursday, Jun 01, 2006	Friday, Jun 02, 2006	Saturday, Jun 03, 2006	Sunday, Jun 04, 2006	Monday, Jun 05, 2006	Tuesday, Jun 06, 2006	Wednesday, Jun 07, 2006
Regular	1	42					7	7					7	7
Holiday	1	7			7									
Sick	1	7				7								
Vacation	1	7							7					
Comp Time	1	7												
<b>Total Hours:</b>		70			7	7	7	7	7			7	7	
<b>Total Units:</b>			0											

[Previous Menu](#)

RELEASE: 7.3

Powered by:

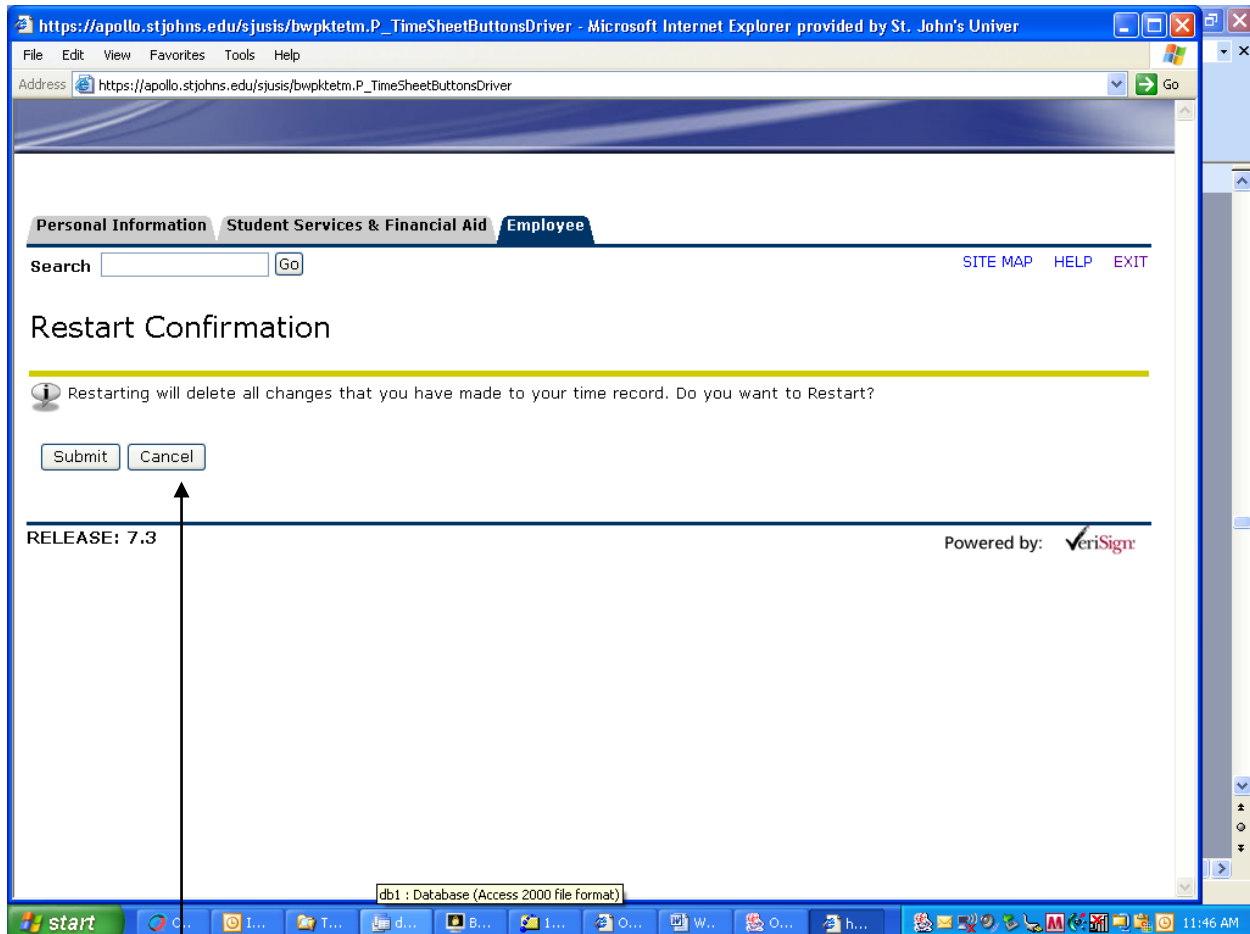
Done Internet

start 4 Micros... 2 Windo... Microsoft ... 2 Micros... 3 Intern... Address 12:09 PM

## I. Restarting

The Restart Confirmation Page will appear when you click the **Restart** button from the Time Sheet Page. All previously made entries will be removed and the record re-initialized with the most current information.

***NOTE: If changes are made to your job mid pay period, you may be asked by Payroll Office to restart your timesheet to capture those changes.***



Clicking **Cancel** returns the employee back to the unchanged time sheet. If you click **Submit** you must re-enter hours.

## J. Enter Comments

The **Comments** button is used by Originator or Approvers to enter and view comments about the pay period. For example, to explain additional hours not reported on a previous pay period. Adding comments to your time sheet is optional and not required for processing of time sheet.

**Time Sheet**

To begin, click a link under the date where you want to enter time. Click NEXT/PREVIOUS button for more dates within the period.

**Time Sheet**

Title and Number: College Work Study Student I-V -- S01969-00  
 Department and Number: Human Resource Director -- 261  
 Time Sheet Period: Apr 02, 2006 to Apr 15, 2006  
 Submit By Date: Feb 15, 2008 by 12:00 P.M.

Earning Shift Default Hours or Units	Total Hours	Total Units	Sunday Apr 02, 2006	Monday Apr 03, 2006	Tuesday Apr 04, 2006	Wednesday Apr 05, 2006	Thursday Apr 06, 2006	Friday Apr 07, 2006	Saturday Apr 08, 2006
Regular 1	0	0	Enter Hours	Enter Hours	Enter Hours	Enter Hours	Enter Hours	Enter Hours	Enter Hours
<b>Total Hours:</b>	0		0	0	0	0	0	0	0
<b>Total Units:</b>		0	0	0	0	0	0	0	0

Position Selection   **Comments**   Preview   Submit for Approval   Restart   Next

Submitted for Approval By:

1. Employees can click the **Comments** button to provide additional information to the Approver and/or Payroll.



Comments - Microsoft Internet Explorer provided by St. John's University

File Edit View Favorites Tools Help

Back Forward Stop Home Search Favorites Media

Address [http://devapallo.stjohns.edu:8070/tban7/bwpktetm.P\\_TimeSheetButtonsDriver](http://devapallo.stjohns.edu:8070/tban7/bwpktetm.P_TimeSheetButtonsDriver) Go

Personal Information Student and Financial Aid **Employee**

Search  Go [SITE MAP](#) [HELP](#) [EXIT](#)

## Comments

To edit a comment, just type over the information previously entered. Your comments may be entered/edited up to the time the record is submitted for approval.

Made By: You  
Comment Date: Mar 04, 2007  
Enter or Edit Comment:

RELEASE: 7.2.1.1 Powered by: VeriSign

Done Internet

start Project Mgt E-MAIL SAVE Oracle Appl... Oracle Dev... Comments ... Web Time ... Address 9:18 PM

1. Click **Save** to send the comments with the time sheet.
2. To add more comments, repeat the previous steps and **Save**.
3. Click **Previous Menu** to return to the Time Sheet.

**K. Submitting Time:**

Reminder: Hours must be entered on the Time Sheet on a daily basis. Enter the hours worked, click **Save**, and exit UIS website. Repeat this step throughout the pay period.

**Caution: Do not submit hours until time entry has been completed for the entire pay period. Once the time sheet has been submitted for approval, it cannot be accessed by the originator.**

1. When you have finished entering time for the entire pay period and your time sheet is ready for approval, **click on the Submit button** to send your time sheet to your Approver. Your time sheet cannot be approved and processed until it has been submitted.
2. Check the status of your time sheet on the position selection page.

**Note: Employees are responsible for submitting their time sheet to the approver. Employees who fail to submit time sheet for approval will not receive a paycheck for the pay period and must contact the Payroll Office.**

3. The status is set to ***Pending*** when the time sheet is submitted. The status will remain as Pending until the Approver takes action.
4. The status is set to ***Awaiting Approval*** if the time sheet record is returned to the employee for correction.
5. The status is set to ***Error*** if the time sheet record contains an error. Contact the Payroll Office 718-990-1471.
6. The status is set to ***Approved*** after the Approver sends it to Payroll for processing.

**Note: Approvers are responsible for approving their employees time sheet. Time sheets not approved by the due date will not be processed. Time sheets with no hours do not need approval.**

7. The status is set to ***Completed*** when Payroll has processed the time sheet.

#### L. Altering time after Submission

Once you **Submit** your time sheet for approval, **you cannot make changes to it**. If changes are necessary, you must contact your Approver (listed at the bottom of the Time Sheet page).

1. If the time sheet has been **Approved**, it cannot be changed by the Approver. Approver must contact Payroll to make any changes. Only time sheets **Pending** approval can be changed by approver.
2. If the time sheet has not been **Approved**, the Approver can either make the change or disapprove the time sheet, which returns the time sheet to the employee for correction.

#### M. Returned for Correction

If the Approver disapproves the time sheet, the status on the Position Selection Page will be ***Return for Correction***. When the time sheet is returned for correction, the employee must:

1. Choose the position and pay period for which corrections are necessary.
2. Click the link under the appropriate date and earn code
3. Enter the correct hours.
4. Click **Submit** to send it to the Approver again before the **Submit By** deadline shown on the time sheet.
5. **Certify Time** to complete the process.
6. Contact Approver to inform them you have re-submitted your time sheet.

## N. Certifying Time

This process acts as your **legally binding electronic signature** to certify that the hours entered are an accurate record of the hours worked.

Personal Information Student and Financial Aid **Employee**

Search  Go SITE MAP HELP EXIT

### Certification

I certify that the time entered represents a true and accurate record of my time. I am responsible for any changes made using my ID and PIN.

Enter your PIN and select Submit if you agree with the previous statement. Otherwise, select Exit and your time transaction will not be submitted for approval. You will be redirected to the User Logout web page.

PIN:

Submit

RELEASE: 7.3

Powered by: VeriSign

Enter your PIN / Password and select Submit. After you submit only your Approver can make changes.

http://devapollo.stjohns.edu:8070/tban7/bwpktesb.P\_CertificationDriver - Microsoft Internet Explorer provided by St. John's Uni

Address http://devapollo.stjohns.edu:8070/tban7/bwpktesb.P\_CertificationDriver

### Time Sheet

To begin, click a link under the date where you want to enter time. Click NEXT/PREVIOUS button for more dates within the period.

**Warning:** Your time sheet was submitted successfully.

**Time Sheet**

Title and Number: College Work Study Student I-V -- S01969-00

Department and Number: Human Resource Director -- 261

Time Sheet Period: Apr 16, 2006 to Apr 29, 2006

Submit By Date: Feb 15, 2008 by 12:00 P.M.

Earning Shift Default	Total Hours	Total Sunday Units	Monday Apr 16, 2006	Tuesday Apr 17, 2006	Wednesday Apr 18, 2006	Thursday Apr 19, 2006	Friday Apr 20, 2006	Saturday Apr 21, 2006	Sunday Apr 22, 2006
Regular 1	0	.25	.25	Enter Hours	Enter Hours	Enter Hours	Enter Hours	Enter Hours	Enter Hours
Total Hours:	.25	.25	0	0	0	0	0	0	0
Total Units:	0	0	0	0	0	0	0	0	0

Position Selection Comments Preview Next

Submitted for Approval By: You on Jun 27, 2007

Approved By: Richard Geraci

Waiting for Approval From: Richard Geraci

RELEASE: 7.2.1.1

Powered by: VeriSign

The following message will appear at the top of the page: ***Your time sheet was submitted successfully.*** Your time sheet is now ready for approval. **Exit and close your web browser.**

**For additional information or training, please contact:**

David Martinez	(718) 990-5953	<a href="mailto:martined@stjohns.edu">martined@stjohns.edu</a>
Marilyn Thode	(718) 990-6374	<a href="mailto:thodem@stjohns.edu">thodem@stjohns.edu</a>
Rose Costales	(718) 990-1471	<a href="mailto:costaler@stjohns.edu">costaler@stjohns.edu</a>

**Helpful Tips:**

- Check the Pay Schedule located on the Human Resources website
- Enter hours worked every day
- Submit your hours on or before the due date, but no later than your last work day of the pay period.
- Remind your Supervisor to approve your hours
- Contact Payroll Office if you have any problems